

CHRISTIANSTED HARBOR ST. CROIX, U.S.V.I. PROJECT CONDITION SURVEY 16-FOOT PROJECT FY21

SURVEY NOTES

- REFER TO SURVEY NO. 21-153.
 - SOUNDINGS ARE IN FEET AND TENTHS AND REFER TO NOAA'S REPORTED MEAN LOWER LOW WATER (MLLW) OF THE 1983-2001 TIDAL EPOCH.
 - TIDAL REDUCTIONS WERE OBTAINED UTILIZING EXISTING TIDAL SURVEY CONTROL MONUMENTS '975 1364 A' (PID: DK7162) AND '975 1364 B' (PID: DK7161).
 - ALL ELEVATIONS ARE BELOW THE CHART DATUM UNLESS PRECEDED BY A (+) SIGN.
 - PLANE COORDINATES ARE BASED ON THE LAMBERT CONFORMAL CONIC PROJECTION FOR PUERTO RICO & THE VIRGIN ISLANDS, ZONE 5200, AND REFERENCED TO THE NORTH AMERICAN DATUM OF 1983 (NAD83).
 - ALL STATIONING REFERS TO THE CENTERLINE OF THE CHANNEL.
 - VERTICAL MEASUREMENTS WERE MADE USING AN ODOM HYDROTRAC CV100 DF ECHOSOUNDER WITH A DUAL-FREQUENCY (24/200 KHZ) ODOM TRANSDUCER. ALL SOUNDINGS SHOWN ARE IN HIGH FREQUENCY.
- | VESSEL | DATE OF SURVEY | CUT |
|------------------|----------------|-------------------------|
| SCARBA YEAR 2008 | 18-20 JAN 2022 | CUTS 1-3, TURNING BASIN |
- AIDS TO NAVIGATION WERE LOCATED DURING THIS SURVEY.
 - THE INFORMATION DEPICTED ON THIS MAP REPRESENTS THE RESULTS OF SURVEYS MADE ON THE DATES INDICATED ABOVE AND CAN ONLY BE CONSIDERED AS INDICATING THE GENERAL CONDITIONS AT THAT TIME. THIS CHART IS SOLELY FOR THE DISTRIBUTION OF AVAILABLE DEPTHS AT THE TIME OF THE SURVEY.
 - SURVEY ACCURACY PERFORMANCE STANDARDS, QUALITY CONTROL, AND QUALITY ASSURANCE REQUIREMENTS WERE FOLLOWED DURING THIS SURVEY IN ACCORDANCE WITH USACE EM 1110-2-1003, HYDROGRAPHIC SURVEYING, 30 NOV 2013.
 - SURVEY WAS PERFORMED BY JAVIER E. BIDOT & ASSOCIATES, CAGUAS PUERTO RICO.

LEGEND	
	MONUMENT
	LIGHTED BEACON
	GREEN DAYBEACON
	RED DAYBEACON
	RED LIGHTED BUOY
	GREEN LIGHTED BUOY
	CAN BUOY
	NUN BUOY
	TIDE STAFF
	PROJECT DEPTH

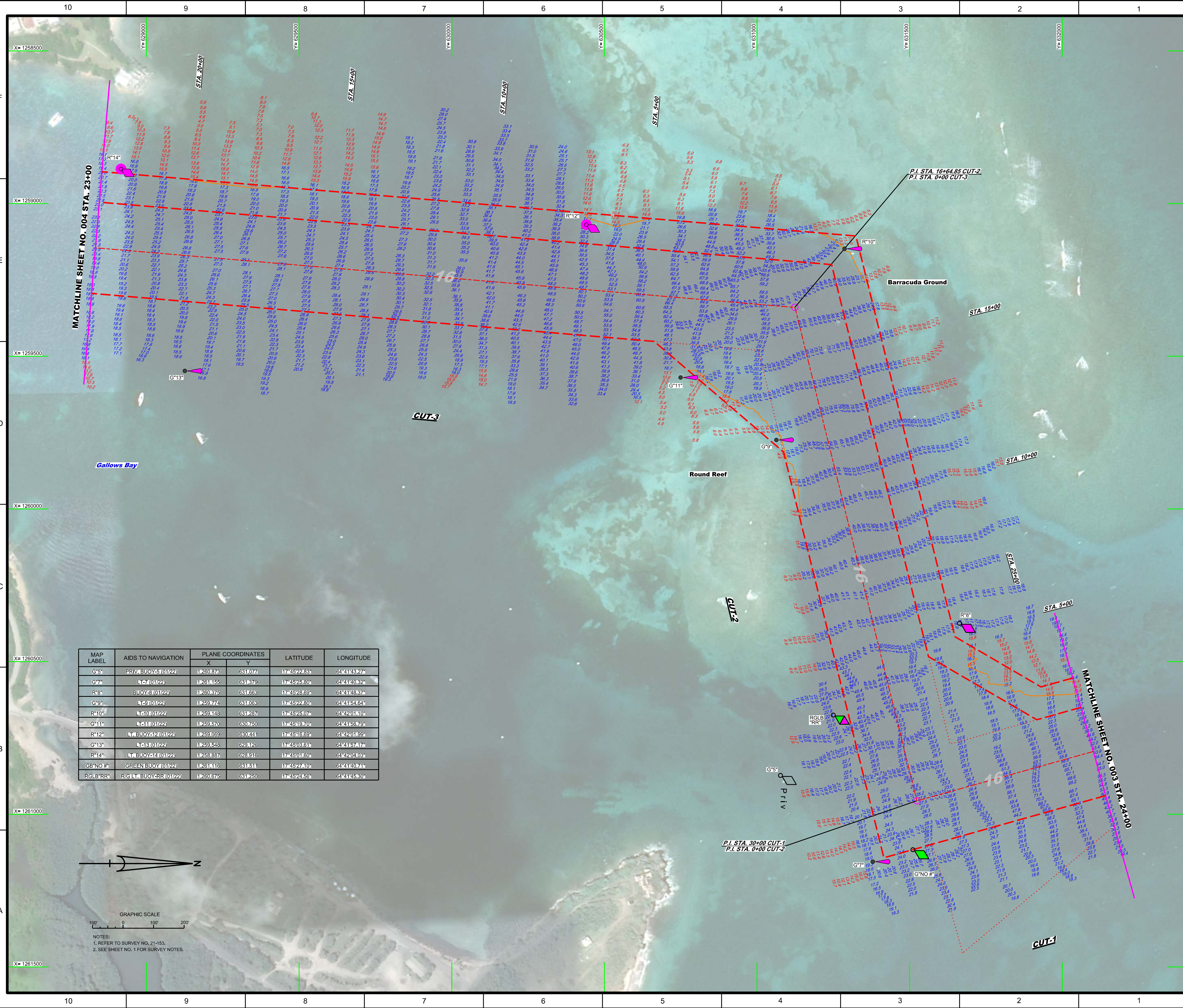
US Army Corps of Engineers
Jacksonville District
SAFETY ON THIS JOB DEPENDS ON YOU

Checked by: GHR	Designed by: WRM	Drawn by: WRM	File No: W1225-000-0000	Project: CHRISTIANSTED HARBOR, ST. CROIX, U.S.V.I.
Checked by: GHR	Designed by: WRM	Drawn by: WRM	File No: W1225-000-0000	Project: CHRISTIANSTED HARBOR, ST. CROIX, U.S.V.I.
Checked by: GHR	Designed by: WRM	Drawn by: WRM	File No: W1225-000-0000	Project: CHRISTIANSTED HARBOR, ST. CROIX, U.S.V.I.

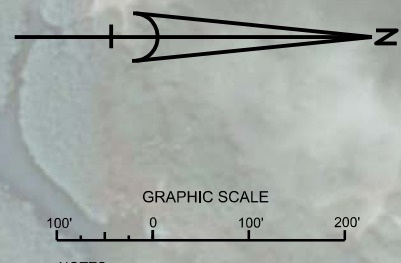
DEPARTMENT OF THE ARMY
JACKSONVILLE DISTRICT, CORPS OF ENGINEERS
JACKSONVILLE, FLORIDA

CHRISTIANSTED HARBOR
ST. CROIX, U.S. VIRGIN ISLANDS
PROJECT CONDITION SURVEY FY21
INDEX, LOCATION AND VICINITY
MAP

Scale: AS SHOWN
Drawing no. 1
SHEET 01 OF 04



MAP LABEL	AIDS TO NAVIGATION	PLANE COORDINATES		LATITUDE	LONGITUDE
		X	Y		
G*5	PRIV. BUOY-5 (01/22)	17260876	6311077	17°45'22.83"	64°41'18.27"
G*7	LRB (01/22)	17261155	6311870	17°45'25.80"	64°41'10.32"
R*8	BUOY-8 (01/22)	17260876	6311668	17°45'23.69"	64°41'18.78"
G*9	LRB (01/22)	17260774	6311068	17°45'22.80"	64°41'18.61"
R*10	LRB (01/22)	17260648	6311287	17°45'25.07"	64°42'01.10"
G*11	LRB (01/22)	17260570	6307650	17°45'19.70"	64°41'56.78"
R*12	LRB (01/22)	17260069	6300441	17°45'16.69"	64°42'01.69"
G*13	LRB (01/22)	17260548	6308126	17°45'08.81"	64°41'57.17"
R*14	LRB (01/22)	17260887	6308916	17°45'01.60"	64°42'04.08"
GB#NO #	GREEN BUOY (01/22)	17261116	6311511	17°45'27.41"	64°41'10.74"
RLB#RR	R/G L.B. BUOY-RR (01/22)	17260976	6311950	17°45'22.56"	64°41'15.39"



NOTES:
1. REFER TO SURVEY NO. 21-153.
2. SEE SHEET NO. 1 FOR SURVEY NOTES.

